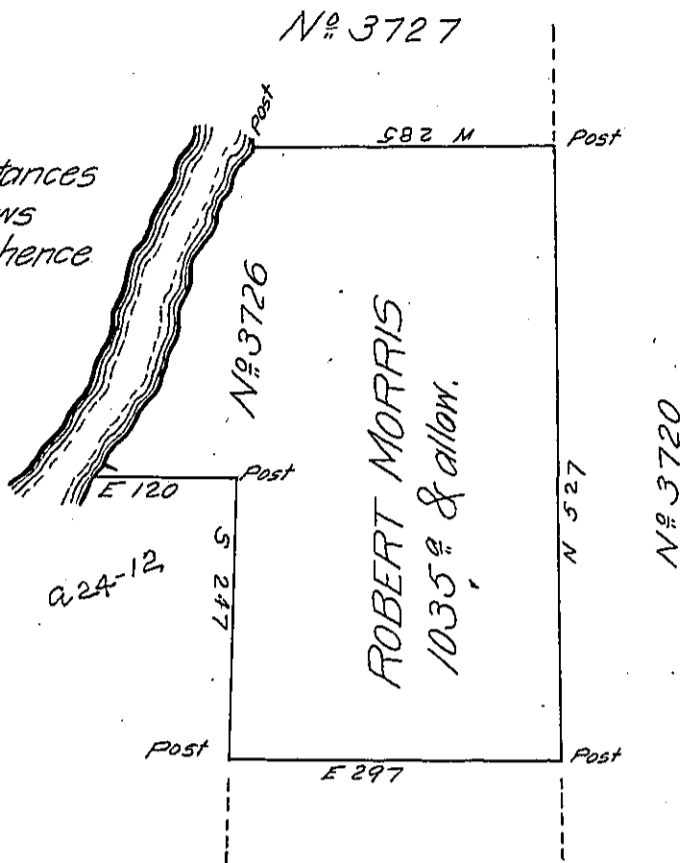


The Courses & Distances  
up the river as follows  
Beginning at A Post thence  
N 2 E 60

N 14 E 114 N 21 E 82  
N 33 E 60 to A Post



By Virtue of A Warrant granted to Robert Morris the 5<sup>th</sup> Day of March 1793 & N<sup>o</sup> 3726  
Surv<sup>d</sup> the 7<sup>th</sup> Day of Aug<sup>t</sup> 1793 Situate in Northum<sup>d</sup> County on the East Side of Alegany  
River adjoining said river & other Land of Said Morris Containing one thousand & thirty  
five acres & allow.

To Daniel Brodhead Esq<sup>r</sup> }  
Surveyor General

W<sup>m</sup> P. Brady D.S.

IN TESTIMONY that the above is a copy of the original remaining on file in  
the Department of Internal Affairs of Pennsylvania, made  
conformably to an Act of Assembly approved the 16th day of  
February, 1833, I have hereunto set my Hand and caused  
the Seal of said Department to be affixed at Harrisburg,  
this fifth day of February 1906

*Hoac D. Brown*  
Secretary of Internal Affairs.